

The Arizona Higher Education Enterprise and *Getting AHEAD* Update

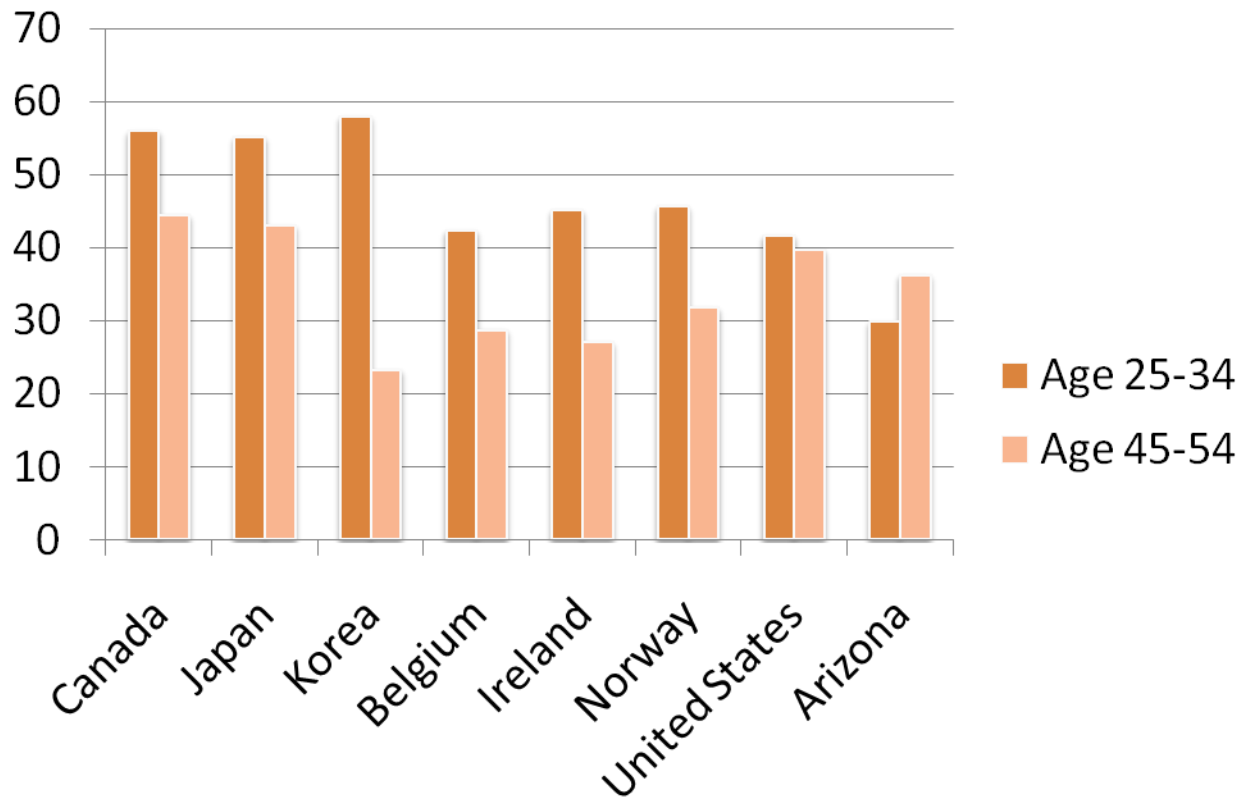
Presented by Katie Paquet, Associate Vice President for Public Affairs
Arizona Board of Regents

September 20, 2011

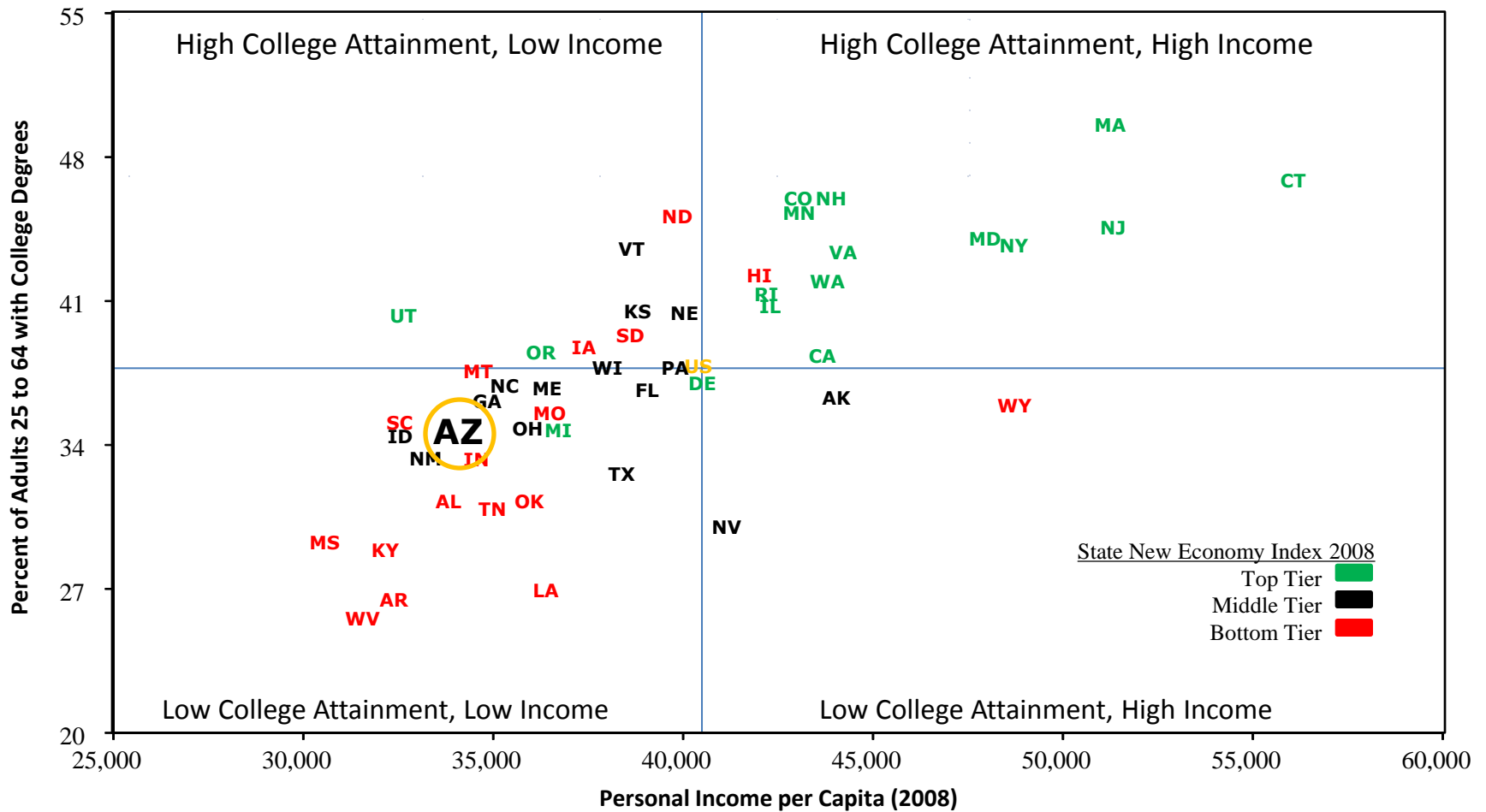


College Completion: Arizona & U.S. Versus the World

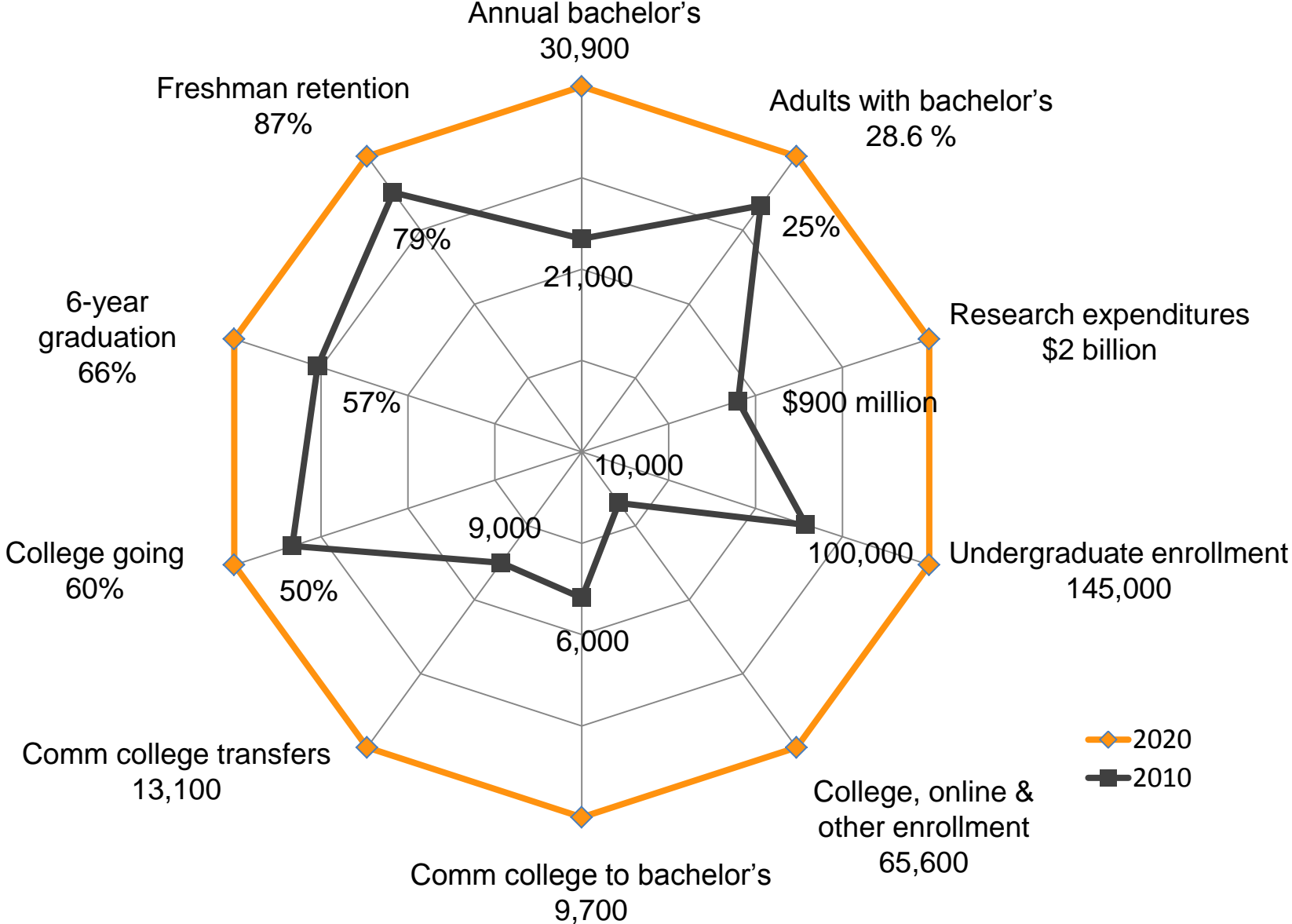
Percentage of Adults with Associate's Degree and Higher, by Age Group



Quality Education Drives Economies

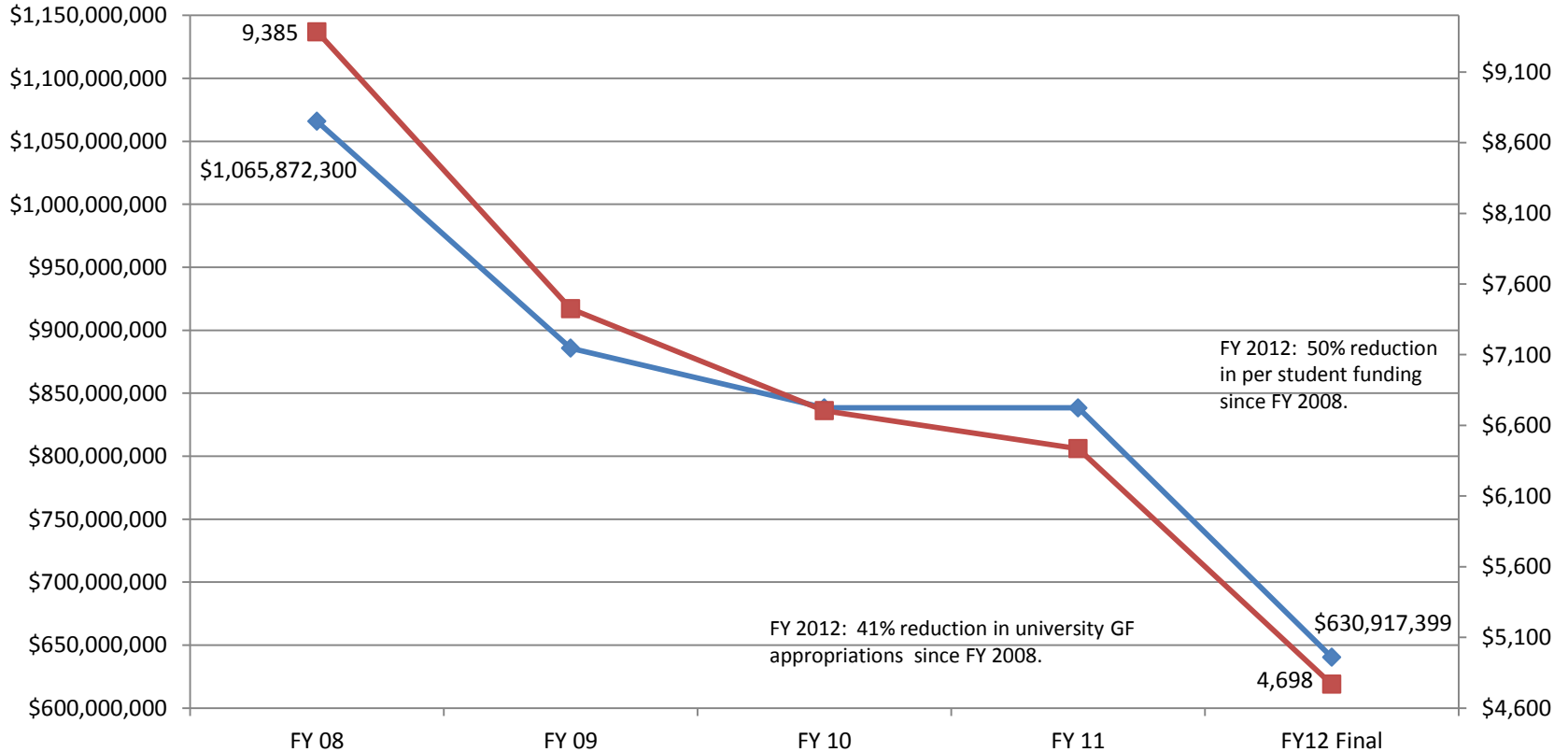


Arizona Higher Education Enterprise, 2010 to 2020



ARIZONA UNIVERSITIES GENERAL FUND APPROPRIATION AND GENERAL FUND PER FTE FUNDING FY 2008 - FY 2012 (1)

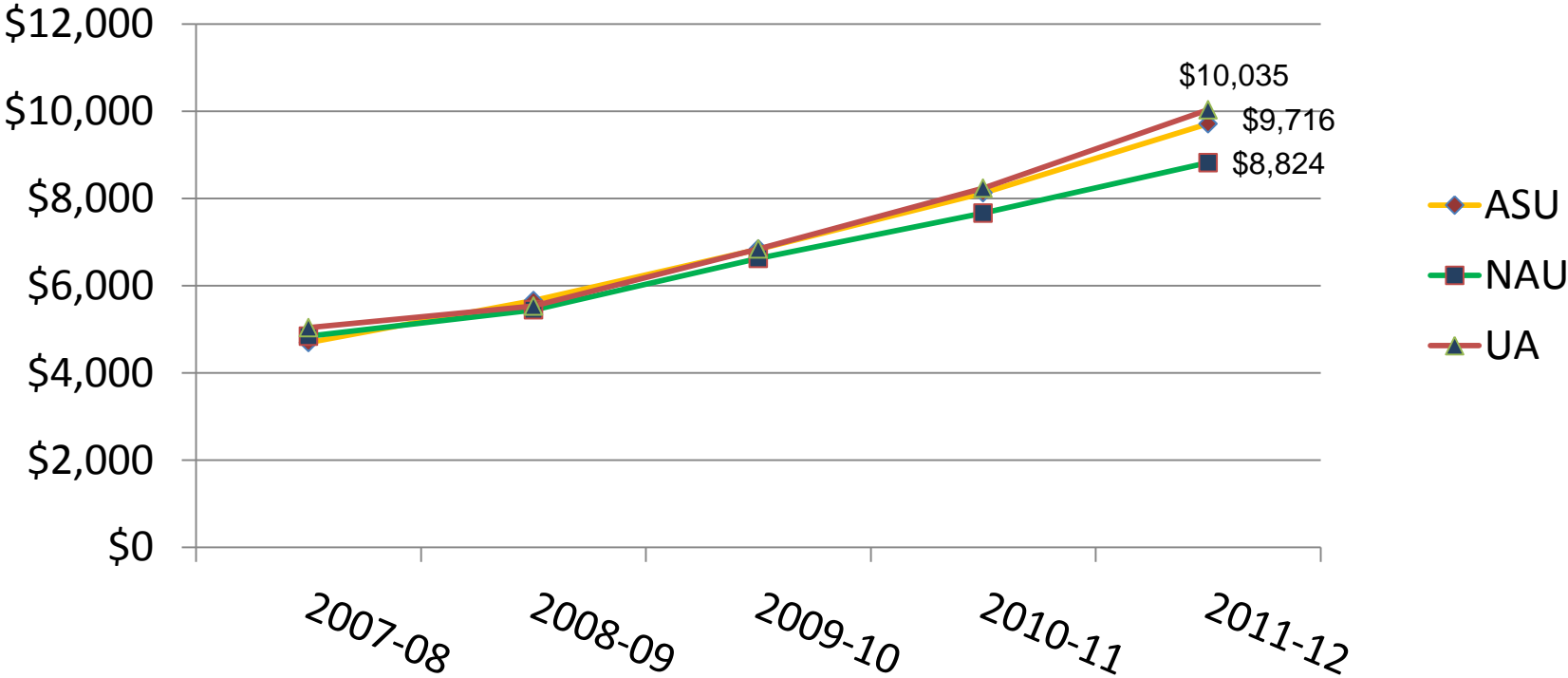
◆ GF TO U's less RI ■ University GF Per FTE



(1) FY 2011-12 shown is GF level for the universities in Budget as passed by legislature and estimated student FTE. All appropriations shown exclude Research Infrastructure and ABOR System Office appropriation.

Recent Tuition Hikes

Record tuition increases: 90 percent over four years

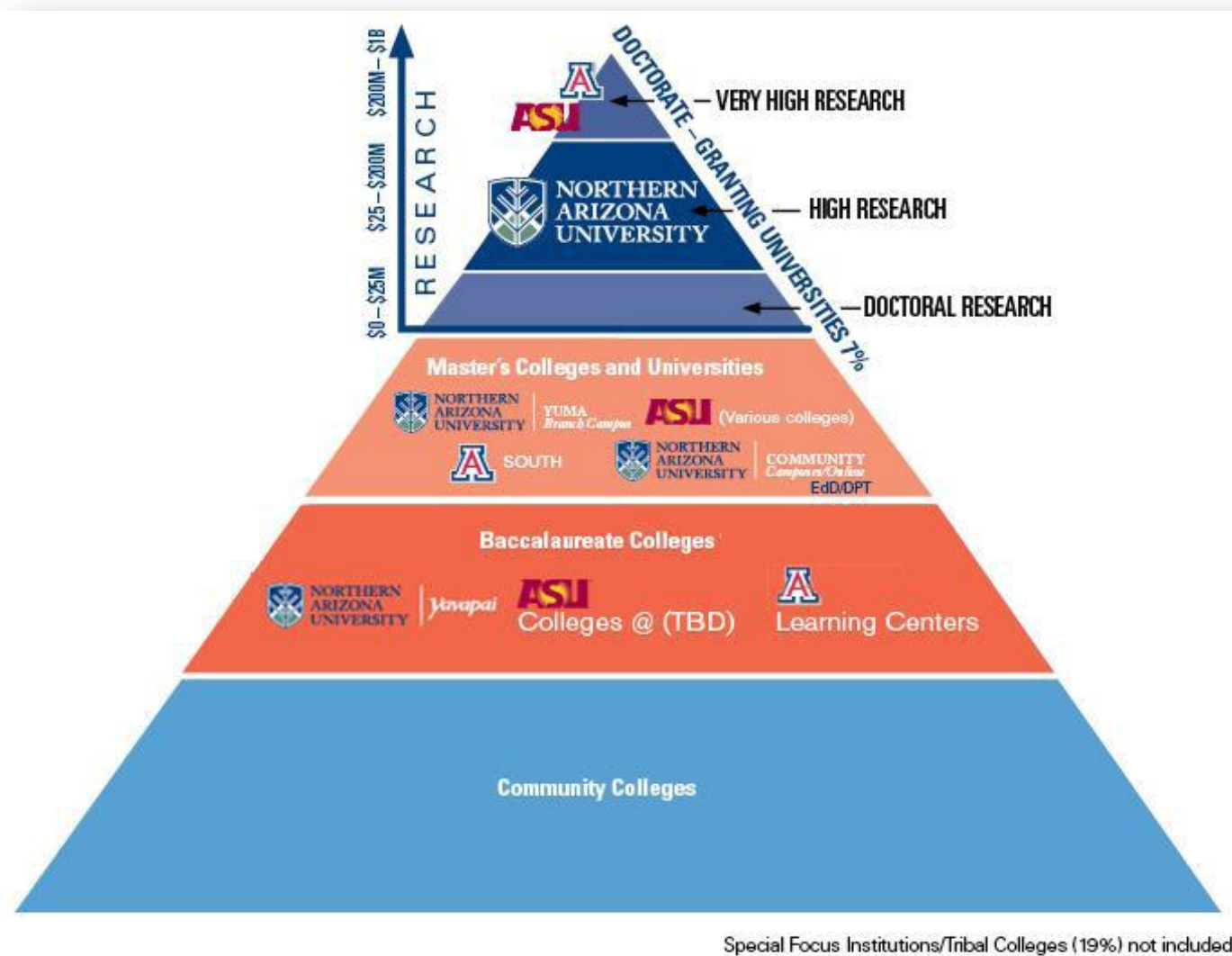


Beginning Fall 2008, ASU and NAU implemented tuition guarantee programs. Rates shown are for new students entering that year. Continuing students pay a lesser amount.

Getting AHEAD Project

- **Arizona one of 7 states awarded grant from the Lumina Foundation**
 - **Collaboration between the University System and Community Colleges** with seamless credit transfer
 - **Broader geographic access** for student convenience
 - **Improving e-advising**
 - **Lower-cost, high-quality degree options**
 - **Improved coordination**, planning and governance
 - Exploring modern funding formulas

System Architecture Reform



Advancing the Research Enterprise

FY2010 Research Enterprise Impact

**\$873 million in
Research
Expenditures**

**\$416 million
In Federally
Funded
Research**

**957
Doctoral
Degrees
Awarded**

**625
Postdoctoral
Appointees**

**47
National
Academy
Members**

**257
Invention
Disclosures**

**165
Patent
Applications
Filed**

**36
Patents Issued**

**88
Licensing
Agreements**

**\$1.9 million
in Licensing
Revenue**

**9
Start-up
Companies**

New funding formula with the state: performance funding

University system to state: fund us based on meeting performance metrics that further enhance the state's economic competitiveness.

1. Increases in number of degrees awarded (weighted by level & cost)
2. Increases in number of completed student credit hours (weighted by level & cost)
3. Increases in external research and public service funding

Progress to Date

Increased Productivity 2008-2010

Total enrollment (U)	+ 14.6%
Community college transfers*	+ 13.1%
Freshman retention (U)	+ 1.5%
Six-year graduation rate (U)	+ 2.4%
Bachelor's degrees awarded*	+ 14.4%

* 2006-2010 data, Arizona Board of Regents